




**EUROPEAN UNION PRIZE**  
FOR CONTEMPORARY  
ARCHITECTURE

**MIES VAN DER ROHE**  
**AWARD 2013**

mies  barcelona

*"Form follows water, water follows snow,  
both falling down."*

Stefano Pujatti



## **1301 iNN (Slow Horse)**

Piancavallo, Italy

Architects

Stefano Pujatti

Alberto del Maschio

Valeria Brero

**Elasticospa+3**

Client

**PROMOTUR**

Located in a town that had been developed in the 1970s for tourism, this project recuperates an existing building to which a new extension has been added. The size of the area is slightly bigger than the building footprint, which covers a surface of 1,000 m<sup>2</sup>. The partial demolition of the original building allowed for the use of the ground floor as the entrance hall, as well as the areas for the technical functions connected with the hotel man-

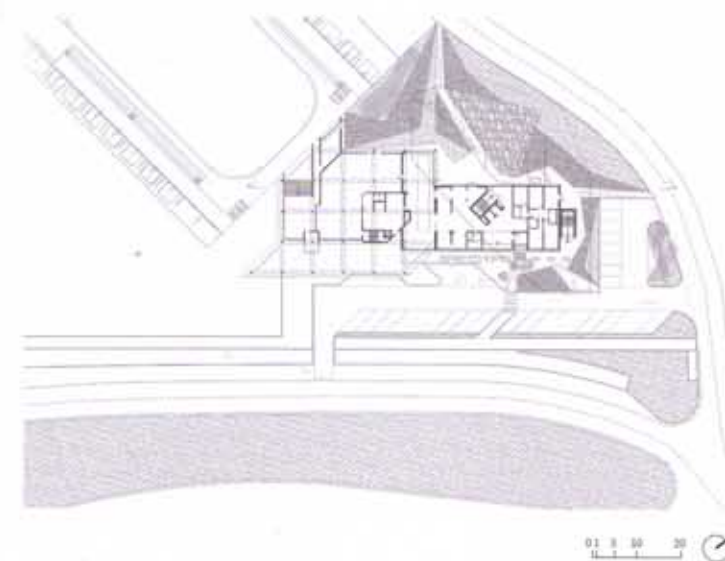
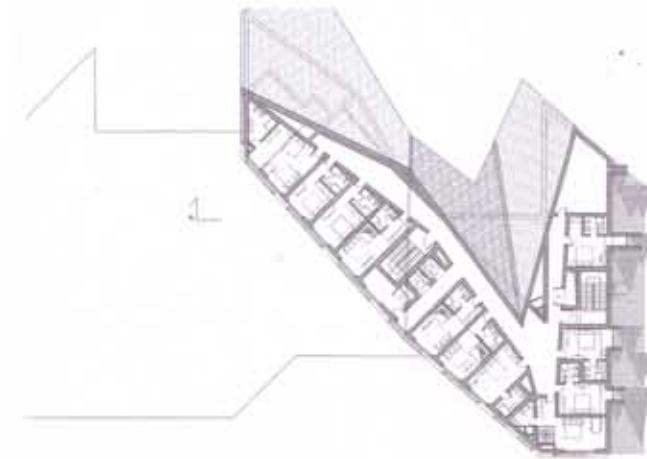
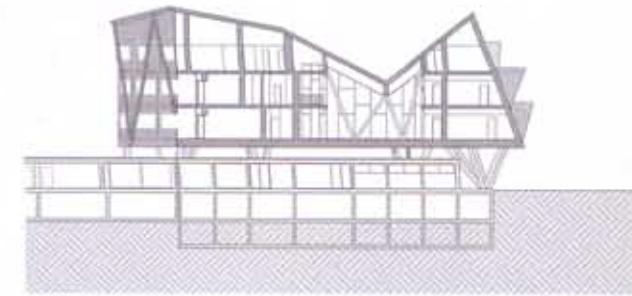
agement. The hotel, distributed on four floors, is composed of 37 bedrooms with 99 beds, the entrance hall and a cafeteria. A second lobby, more private and intimate, is located on the first floor, overlooking the landscape and the sport fields. The new part of the building bridges the existing part. Built on top of a concrete platform, suspended from the old structure, it has been designed completely in wood for its lightness and



to evoke the aura of old mountain structures. The shape of the roof; its capacity for retaining and releasing water, snow and ice; the orientation of the rooms according to the sun and the views; are the driving elements that were used to organise the interior spaces in order to evoke and provoke unique sensations and views. The building envelope is very well insulated, so that little energy is required for heating. The integration of a traditional system with one that allows for the recuperation of the heat dissipated by the ice rink will help to keep the energy costs low.



1301 INN (Slow Horse)



Section

Third floor plan

Site plan

